

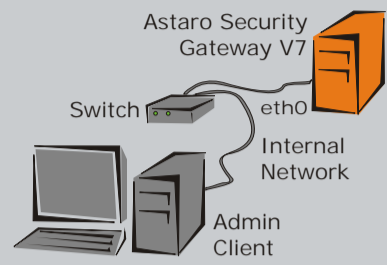


Astaro Security Gateway V7

ASG - Minimum Hardware Requirements:
 Pentium 4 (1.5 GHz) or compatible CPU
 1024 MB RAM
 20 GB IDE/SATA/SCSI hard drive
 Bootable CD-ROM drive

Client - Hard-/Software Requirements:
 1 GHz and 512 MB RAM
 Browser: Firefox recommended
 (<http://www.getfirefox.com/>)
 or Microsoft Internet Explorer 6 or 7
 WebAdmin is running on port 4444

1. Install the Software



Install the Astaro Security Gateway V7 Software on a dedicated machine. The installation will completely erase all data on the hard disk including all programs and the operating system. When the install completes, reboot. Once the system has rebooted (a process which, depending on hardware, can take up to five minutes), ping the IP address of the eth0 interface to ensure it is reachable.

2. Start your Browser and open the graphical user interface (WebAdmin)

Before you can access the graphical user interface (WebAdmin), you will need to configure your *Client Computer* with the LAN connection properties specified during install. If needed, you can later change Astaro's addresses to matches the local network. To change your clients IP address will vary depending on your operating system. For example: With Microsoft Windows XP the menu can be found under *Start-->System Control-->Network connections*.

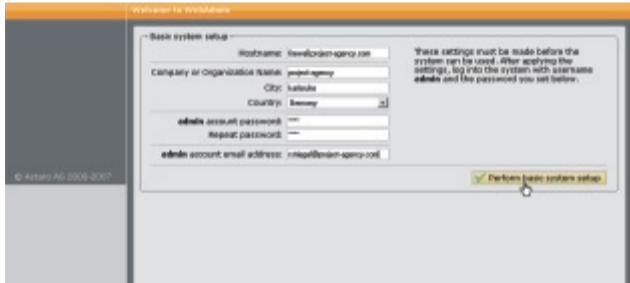


LAN connection properties:
 IP Address: Any address in the range 192.168.2.1 through 192.168.2.254 (192.168.2.100 excepted)
 Netmask: Enter 255.255.255.0
 Standard Gateway: Enter the IP address of the appliance's internal network card (eth0): 192.168.2.100
 DNS Server: Enable this option and enter the IP address of the internal network card (eth0): 192.168.2.100

Admin Client

Once your browser is correctly configured, start it and enter the management address of the security system (the internal IP address configured for eth0) as follows: <https://IP Address:4444> (e.g., <https://192.168.2.100:4444>).

3. Enter the Administrator Contact and set the System Passwords



In the Basic System Setup window, enter the Administrator Contact and the passwords for the Astaro Security Gateway.

4. Log in to WebAdmin & Complete the Setup Wizard



Username: admin
 Password: Password of the WebAdmin user
 Please closely follow the wizard steps to easily setup the Astaro. Optionally, if you'd like to set up manually, click cancel and do steps 5-13 in this guide.

>> The Dashboard



The Dashboard graphically displays a snapshot of the current operating status of the Astaro device. Here you can see what you have enabled, see the hardware usage, and see daily figures for various filters.

5. Check/Changes the Internal Network (LAN) Interface (eth0)



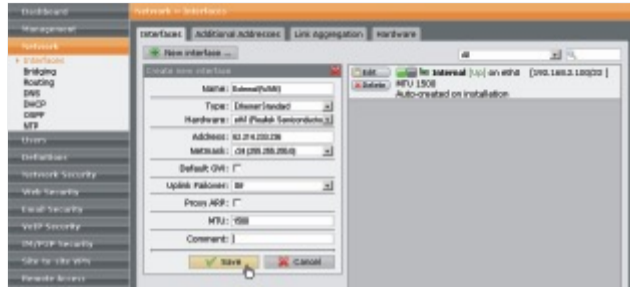
In the Network >> Interfaces directory, open the Interfaces tab and check the settings for eth0 network card. These settings can be changed to match your existing network IP setup if desired, just "edit" them.

6. The Internal Network (LAN) Definition



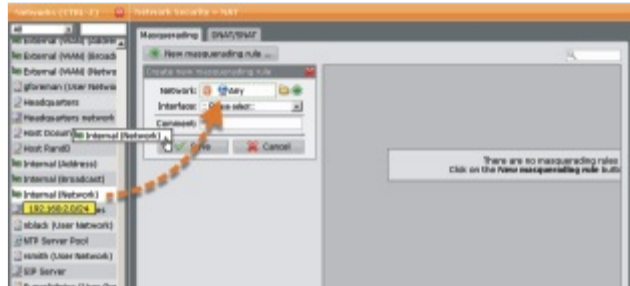
In the Definitions directory, open the Networks menu. You will see 3 "objects" that represent your Internal LAN (based on the Interface config) which can be used to easily make rules and reference your local network throughout ASG.

7. Configure the Internet(WAN) Connection



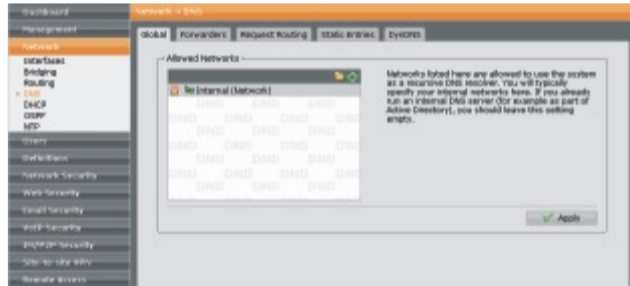
Open the Network >> Interfaces tab and configure the interface to be used to connect to the Internet. The choice of interface and the required settings depend on what kind of connection you have from your ISP.

8. Define Masquerading Rules



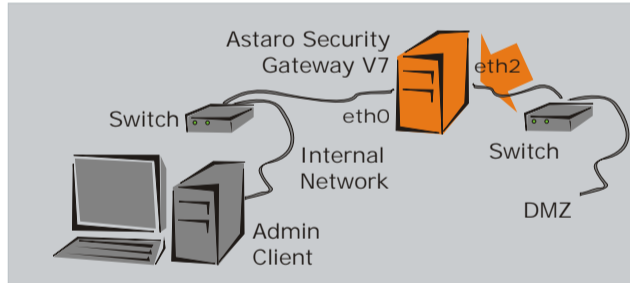
Open the Network Security >> NAT >> Masquerading tab and configure a MASQ rule. This is required if you wish to use private IP addresses for your LAN and you wish to connect to the Internet using machines in your private space.

9. Configure the DNS Proxy



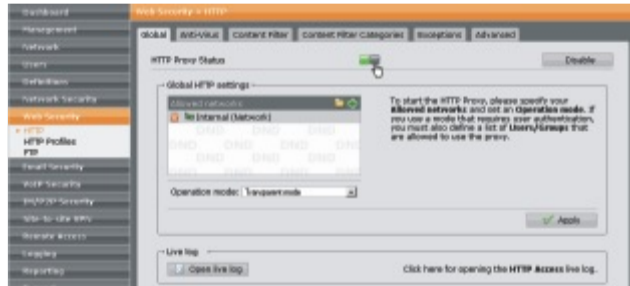
In the Network >> DNS directory, open the Global tab and specify the internal networks to use the Astaro Security Gateway as a DNS resolver.

10. Connect other Networks



If you wish to connect other internal networks (e.g., DMZ) to the Astaro Security Gateway, attach their cables now.

11. Configure Web Filtering



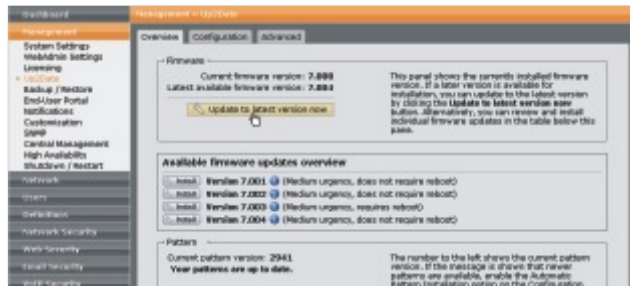
In the Web Security directory, open the HTTP menu and enable the filter. In Transparent mode it isn't necessary to change browser configuration, they will be automatically routed through the Web Filtering. You will also get usage reports on surfing.

12. Configure the Packet Filter



In the Network Security >> Packet Filter directory, open the Rules tab and establish the packet filtering rules. By default, all packets are filtered until you explicitly enable certain services. A common rule is to allow all outgoing traffic.

13. Updating the Astaro



By default, the Firmware and Pattern Up2Dates will be downloaded automatically from the Up2Date server. To keep the system safe, please install any available Firmware Up2Dates ASAP to have the latest features and protection patterns.